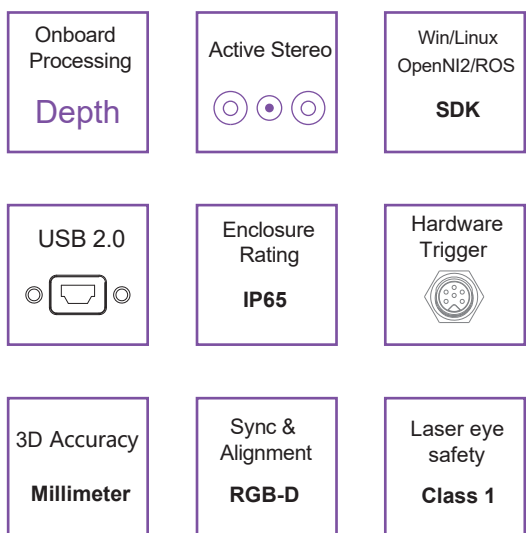
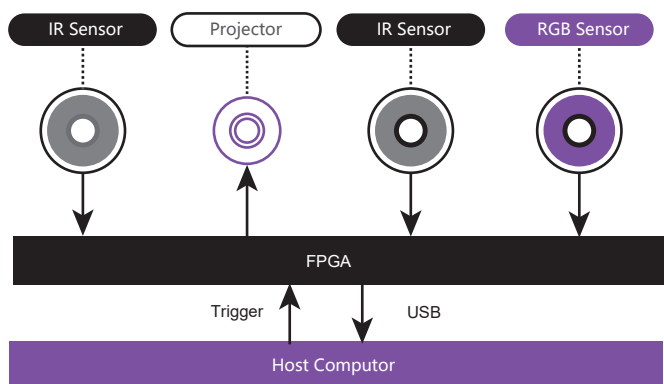


# Percipio 3D Camera

## FM811-TIX



## Principle



## Overview

Thanks to the **active stereo vision technology** with proprietary intellectual property rights, Percipio smart 3D camera offers more depth details and is more robust to ambient light interference than traditional stereo vision.

Percipio FM811-TIX combines structured light with the proven technology of a RGB sensor and delivers colorful depth images in real time.

The powerful visualization platform, broad support of common programming languages, reliable measurement results and the aluminum alloy body make FM811-TIX become the ideal solution for robotics, logistics and inspection, to name a few examples.

Note:  
The specs and dimension may change without notice.

## Advantages

### Active Stereo

FM811-TIX uses the active stereo vision technology and is fitted with two infrared sensors, one RGB sensor and three structured light projectors.

Comparing to the traditional stereo vision camera, FM811-TIX provides:

- + More depth details
- + More robust to ambient light interference

### Industrial Design

FM811-TIX features an IP65-rated design with protection from dirt, dust and water splash.

### Trigger Mode

FM811-TIX supports software trigger and external hardware trigger. With the external hardware trigger, customers can synchronize multi-cameras to capture images.

### High Accuracy Measurement

Thanks to the innovative multi-laser projecting system, FM811-TIX provides high accuracy measurement for stationary objects. With large working range and wide field of view, FM811-TIX can be applied to various scenes.

Note:  
All cameras have been calibrated with intrinsic parameters before delivery. If you need to calibrate multiple cameras with extrinsic parameters, please contact Percipio technical support.

### Structured-light Projector

Project speckle pattern onto the target object.

### Infrared Sensor

Receive speckle pattern reflected from the target object.

### RGB Sensor

Capture color images.

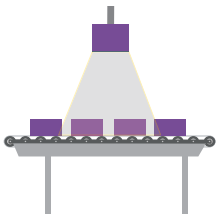
### Embedded Processor

Process infrared and color images:

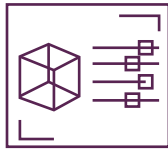
- Calculate depth image, synchronize and align parameters of color and depth images.
- Upload data through the USB interface.
- Receive trigger signal from the host computer or the external trigger source.

# Applications

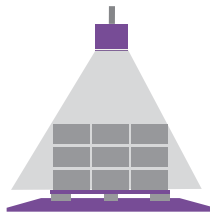
FM811-TIX is suitable for and not limited to the following fields:



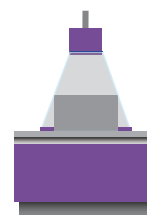
Integrity Check



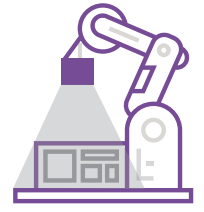
3D Content Generation



Palletizing / De-palletizing



Dimension Measurement



Industrial Sorting

## Features

Dimensions&Weight		Connector	
L x H x W	130.0 mm × 50.9 mm × 77.0 mm	Power	USB 2.0
Weight	520 g	Trigger	5-pin aviation plug
Measurement		Electronics	
Baseline	79 mm	Supply voltage	DC 5 V
Measurement range	700 mm ~ 3500 mm	Power (idle)	1.5 W
FOV(H/W)	56° / 46°	Power (work)	3.5 W
Accuracy	1 mm @ 1 m	Power (trigger)	3.0 W
Software		Ambient Data	
OS	Linux/Windows/Android/ROS	Operating temperature	0°C ~ 45°C
Development platform	Camport SDK	Storage temperature	-10°C ~ 55°C
API	C / C++	Enclosure rating	IP65
Performance			
Depth	5 fps @ 1280×960	Color	12 fps @ 1280×960
	5 fps @ 640×480		24 fps @ 640×480
	5 fps @ 320×240		24 fps @ 320×240
RGB-D Sync&Alignment	√		
Output data	Point cloud, depth, IR and color images		



For purchase or business cooperation, please email us:

For technical support, please email us:

For more information about Percipio 3D cameras, please visit :

For online documentation, please visit :

[info@percipio.xyz](mailto:info@percipio.xyz)

[support@percipio.xyz](mailto:support@percipio.xyz)

[www.percipio.xyz](http://www.percipio.xyz)

[percipiodc.readthedocs.io](http://percipiodc.readthedocs.io)